

POWER PACK

250W FULL SPECTRUM

PP250FS



PPE
3.01
μmol/j

The Power Pack is a complete lighting system for high-intensity light requirements.

This powerful lighting system provides intense full spectrum lighting with a PPE of 3.01 μmol/s/W. It offers the best light coverage area and is ideal for 90x90cm growing areas. The Power Pack allows dimming in 25% increments and can also be controlled remotely via RJ12 ports.



REFERENCE	DESIGNATION	GROW AREA	PPE (LED)
PP250FS	Power Pack 250W FULL SPECTRUM	90x90cm / 3' x 3'	3.01 μmol/s/W

GENERAL DETAILS

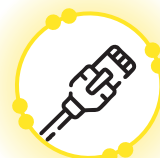
Lifetime	30 000 hours (L90B10)
Application	Grow tent / Grow room / Multi-layer
Plant growth stage	Growing / Blooming
Spectrum	Full Spectrum



High PPE
3.01 μmol/s/W



Dimmable
100% 75% 50% 25% 0%




Connectable
RJ12 remote control



Highly Durable
MTBF 30 000 hours



REF	PP250FS																																																																																	
POWER	250W																																																																																	
																																																																																		
WEIGHT	1.97 kg / 4,33 lb																																																																																	
DIMENSIONS																																																																																		
Length	405 cm / 15.95 inch																																																																																	
Width	305 cm / 12.01 inch																																																																																	
Height	77 cm / 3.03 inch																																																																																	
POWER																																																																																		
Consumption	125 W																																																																																	
Voltage	110-220 V																																																																																	
Frequency	50/60 Hz																																																																																	
CABLE LENGTH																																																																																		
220V	240 cm / 95 inch																																																																																	
PLUG																																																																																		
Type	C/G/A Type																																																																																	
Country	UE/UK																																																																																	
CONNECTION																																																																																		
Ports	Input: RJ12 / Output: RJ12																																																																																	
TEMPERATURE																																																																																		
Working	0 to 40°C / 32 to 105°F																																																																																	
Storing	-40 to 70°C / -40 to 158°F																																																																																	
LED & RATIO																																																																																		
660nm	31%																																																																																	
2700K	23%																																																																																	
4000K	23%																																																																																	
6500K	23%																																																																																	
WATER RESISTANCE	IP54																																																																																	
LIGHT MEASUREMENT																																																																																		
Distance	45 cm / 18 inch																																																																																	
Area	90 x 90 cm / 3' x 3'																																																																																	
PPE (LED)	3.01 $\mu\text{mol/s/W}$																																																																																	
PPF	778 $\mu\text{mol/s}$																																																																																	
PPFD average*	960 $\mu\text{mol/s/m}^2$																																																																																	
PPFD*	<table border="1" style="width: 100%; text-align: center;"> <tr><td>820</td><td>820</td><td>850</td><td>905</td><td>775</td><td>905</td><td>850</td><td>820</td><td>820</td></tr> <tr><td>820</td><td>820</td><td>975</td><td>980</td><td>940</td><td>980</td><td>975</td><td>820</td><td>820</td></tr> <tr><td>850</td><td>975</td><td>1020</td><td>1075</td><td>1100</td><td>1075</td><td>1020</td><td>975</td><td>850</td></tr> <tr><td>905</td><td>980</td><td>1075</td><td>1165</td><td>1210</td><td>1165</td><td>1075</td><td>980</td><td>905</td></tr> <tr><td>775</td><td>940</td><td>1100</td><td>1210</td><td>1260</td><td>1210</td><td>1100</td><td>940</td><td>775</td></tr> <tr><td>905</td><td>980</td><td>1075</td><td>1165</td><td>1210</td><td>1165</td><td>1075</td><td>980</td><td>905</td></tr> <tr><td>850</td><td>975</td><td>1020</td><td>1075</td><td>1100</td><td>1075</td><td>1020</td><td>975</td><td>850</td></tr> <tr><td>820</td><td>820</td><td>975</td><td>980</td><td>940</td><td>980</td><td>975</td><td>820</td><td>820</td></tr> <tr><td>820</td><td>820</td><td>850</td><td>905</td><td>775</td><td>905</td><td>850</td><td>820</td><td>820</td></tr> </table>	820	820	850	905	775	905	850	820	820	820	820	975	980	940	980	975	820	820	850	975	1020	1075	1100	1075	1020	975	850	905	980	1075	1165	1210	1165	1075	980	905	775	940	1100	1210	1260	1210	1100	940	775	905	980	1075	1165	1210	1165	1075	980	905	850	975	1020	1075	1100	1075	1020	975	850	820	820	975	980	940	980	975	820	820	820	820	850	905	775	905	850	820	820
820	820	850	905	775	905	850	820	820																																																																										
820	820	975	980	940	980	975	820	820																																																																										
850	975	1020	1075	1100	1075	1020	975	850																																																																										
905	980	1075	1165	1210	1165	1075	980	905																																																																										
775	940	1100	1210	1260	1210	1100	940	775																																																																										
905	980	1075	1165	1210	1165	1075	980	905																																																																										
850	975	1020	1075	1100	1075	1020	975	850																																																																										
820	820	975	980	940	980	975	820	820																																																																										
820	820	850	905	775	905	850	820	820																																																																										

$\mu\text{mol/s/m}^2$

* Measured on white board at 100% intensity